

Asset and Infrastructure Inventories

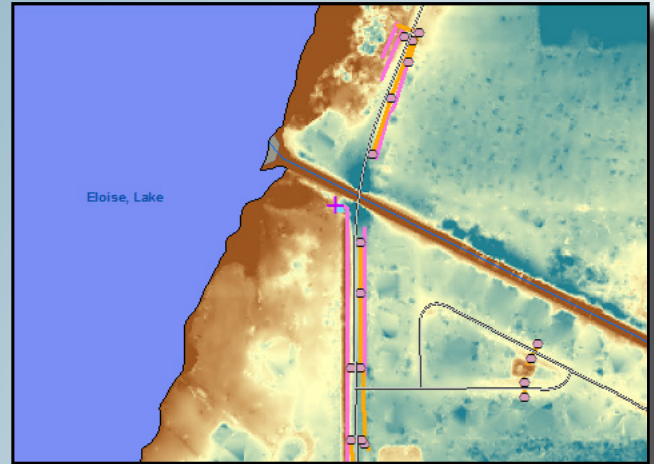
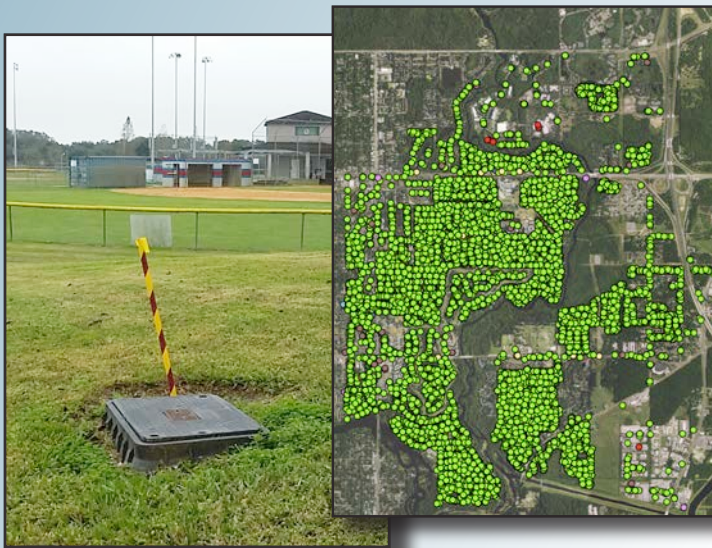


Technical Services from the
Water Institute

The Water Institute's Geographic Information Systems team has over 20 years experience in inventory and asset mapping. As part of the University of South Florida, the Water Institute has access to the latest ESRI GIS applications and cutting-edge field survey equipment. Utilizing the wealth of knowledgeable and eager students enrolled at the University, the Water Institute is able to perform high-quality on-the-ground and remote asset inventories in a cost efficient manner. Example services include:

Single-Asset Rapid Field Assessments:

Using tablets and ArcGIS Collector, field teams are able to quickly maneuver through study areas, geolocating assets, documenting their condition and collecting photographs. Utilizing enterprise databases and web mapping technologies, feature collection can be reviewed by staff and stakeholders in realtime.



Remote Inventory Assessments:

Current aerial imagery and digital elevation models can be used with great efficiency and accuracy to help capture inventory items that may be cost-prohibitive to locate on the ground.

Digitization Assessments:

Historical surveys and asbuilts contain vital information that needs to be accessible and directly comparable with current digital datasets. The Water Institute has the experience and tools necessary for mass scanning of historical paper documents and the heads-up digitization of the assets contained within them.



Advanced Field Assessments:

Having access to the latest technology and equipment at the University of South Florida allows our staff to perform advanced and specialized assessments based on our partner's needs, including network inventories and water and drone-based assessments.



For more information please contact:
Shawn Landry, Director
Phone: (813) 974-4590
Email: Landry@usf.edu

Water Institute
School of Geosciences
4202 E. Fowler Avenue, NES107
Tampa, FL 33620
waterinstitute.usf.edu

